



SCS ENGINEERS

**DUPAGE AIRPORT
SWPPP & SPCC PLAN
TRAINING**

May 5, 2025

WHY ARE WE HERE?

We are here to:

1. Understand the Storm Water Pollution Prevention Plan (SWPPP) Requirements for the Airport.
2. Understand the Spill Prevention, Controls, and Countermeasures (SPCC) Plan for the Airport.
3. Discuss your participation and responsibilities to maintain compliance with both plans.

PURPOSE OF THE NPDES & SWPPP

- The goal of the National Pollutant Discharge Elimination System (NPDES) Permit is to protect storm water quality, which will help protect human health and the environment.
- To do this, a SWPPP provides a “how to” summary for protecting storm water quality.
 - Document and show what is being done to protect storm water quality.
- Federal Requirement (U.S. Environmental Protection Agency [USEPA]) with State (Illinois Environmental Protection Agency [IEPA]) enforcement.



DUPAGE AIRPORT SWPPP

- Airport facilities are required to have a SWPPP because they are involved in:
 - Airfield and aircraft deicing operations
 - Aircraft and ground vehicle fueling
 - Vehicle maintenance
 - Equipment cleaning
- The DuPage Airport operates under an Illinois General Industrial NPDES Permit (Permit No. ILR002955) and has a SWPPP maintained onsite by the DuPage Airport Authority.

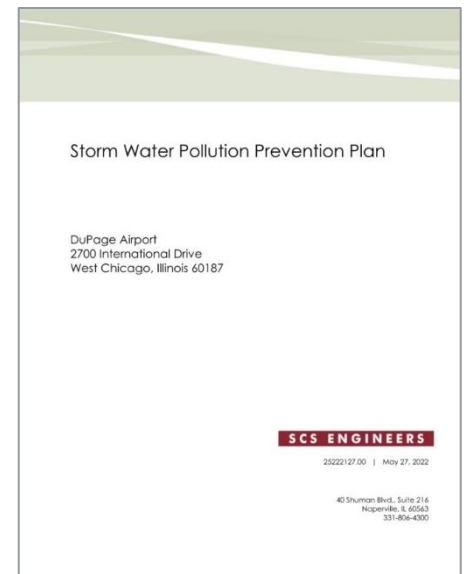


DUPAGE AIRPORT SWPPP

- The DuPage Airport Authority (DAA) is the principal permittee under NPDES Permit No. ILR002955.
- Several tenants are involved in maintenance, fueling, cleaning, and other activities that may discharge pollutants into the storm water management system.
- Tenants are required to be considered co-permittees with the DAA:
 - All Tenants must be familiar with the conditions and requirements of the General NPDES Permit (Annual Training).
 - All Tenants must implement the best management practices outlined in the SWPPP (Annual Training and Annual Audit).

CONTENTS OF THE SWPPP

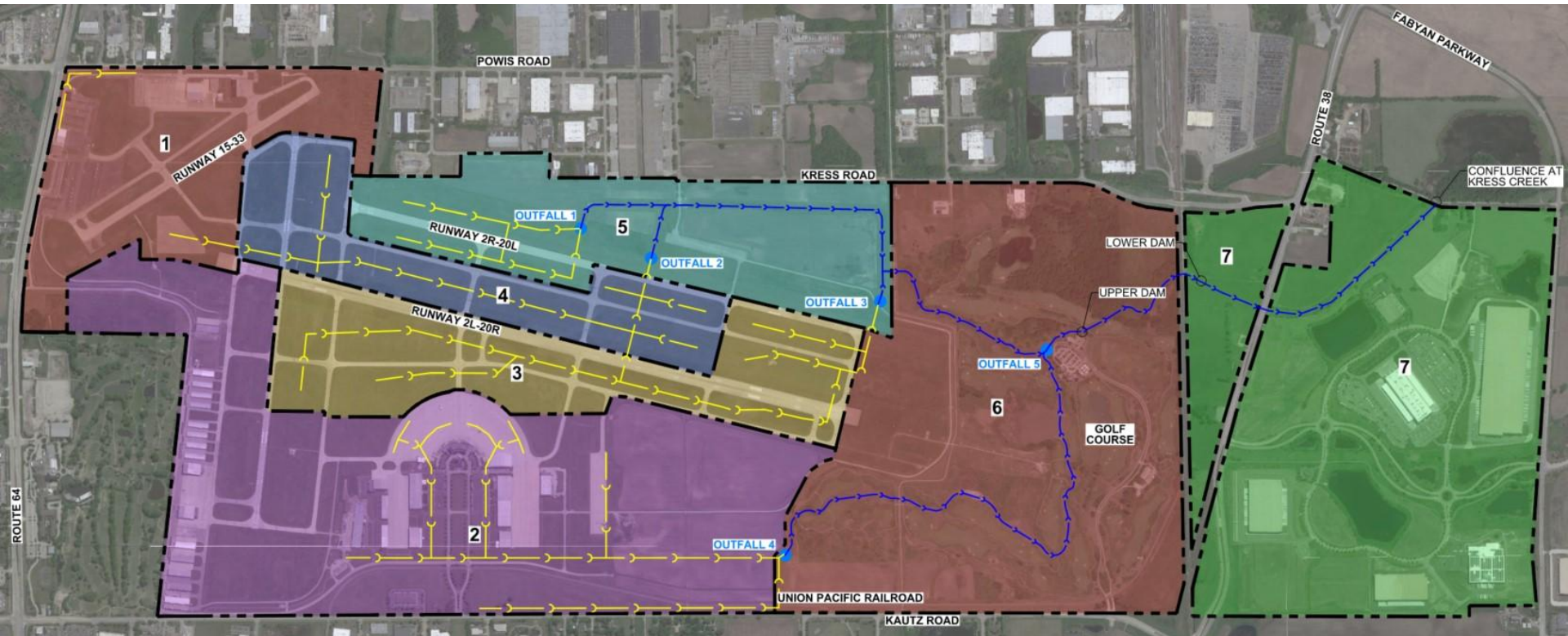
- Identifies Site Contacts and Pollution Prevention Team
- Describes facility/operation (Industrial Activities)
- Storm water flow directions and outfalls
- Potential pollutants
- Best Management Practices (BMPs)
- Spill response procedures
- Requirements for inspections
- Requirements for monitoring and reporting
- Annual Training
- Recordkeeping
- Storm water flow maps with potential pollutant source locations



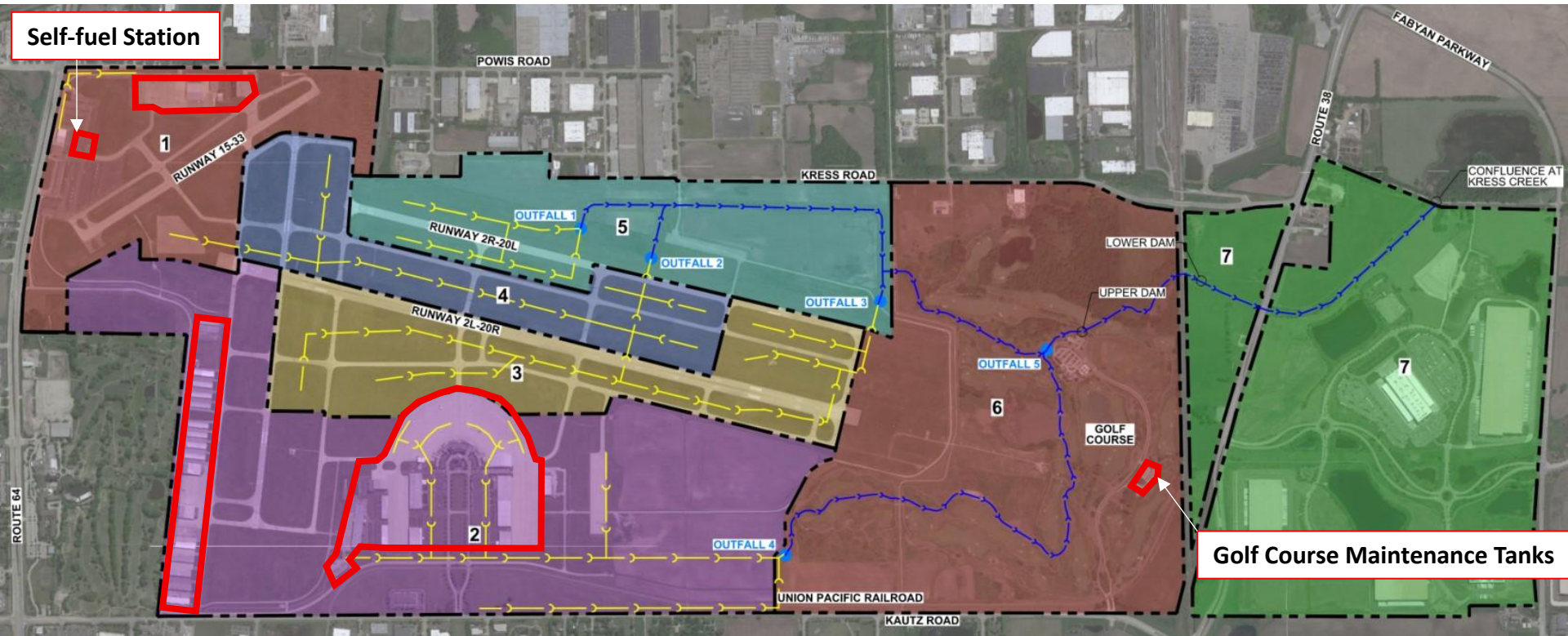
YOUR ROLE IN THE SWPPP

- Identify any activities that are not occurring in the designated areas and communicate that with the DuPage Airport Authority.
- Conduct industrial activities indoors under roof cover, as practicable.
- Do not store anything outdoors (oils, cleaning supplies, equipment, etc.)
- Maintain good housekeeping.
- Contact the DuPage Airport Authority if a spill occurs outdoors.

DUPAGE AIRPORT DRAINAGE AREAS



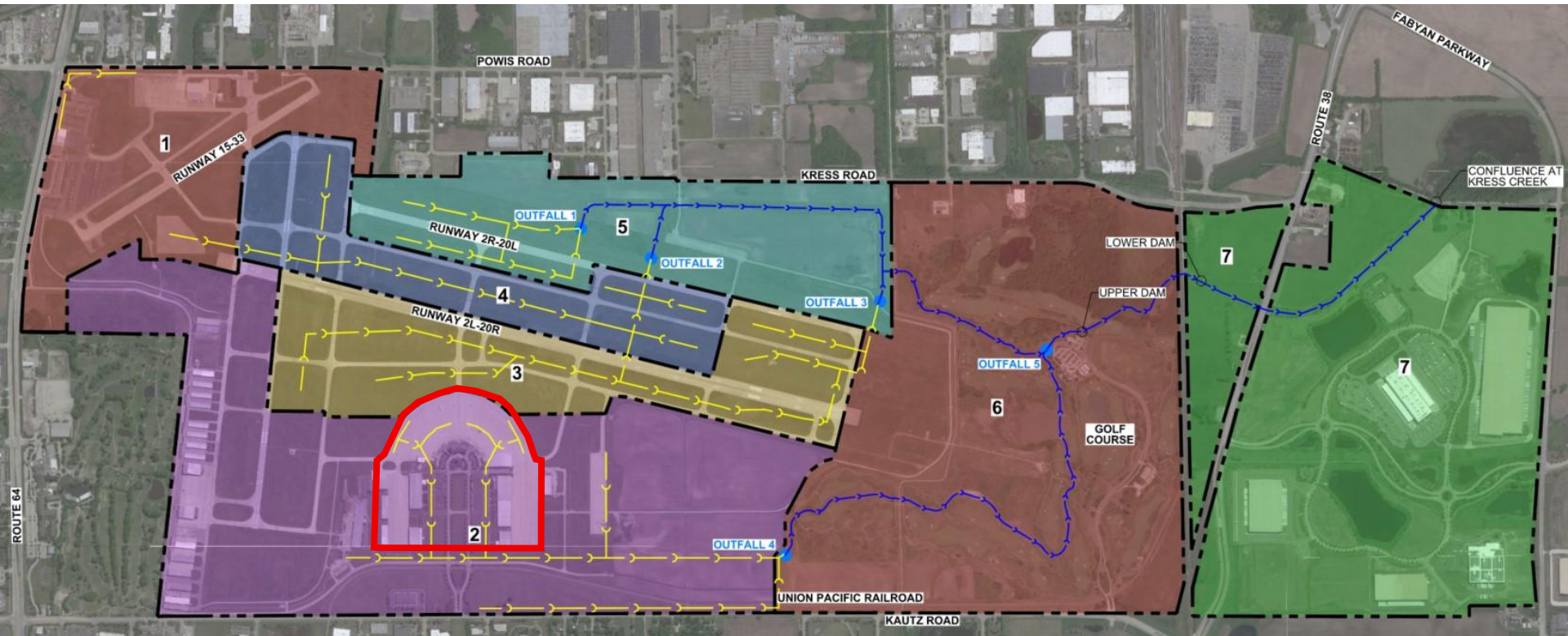
DUPAGE AIRPORT FUELING AREAS



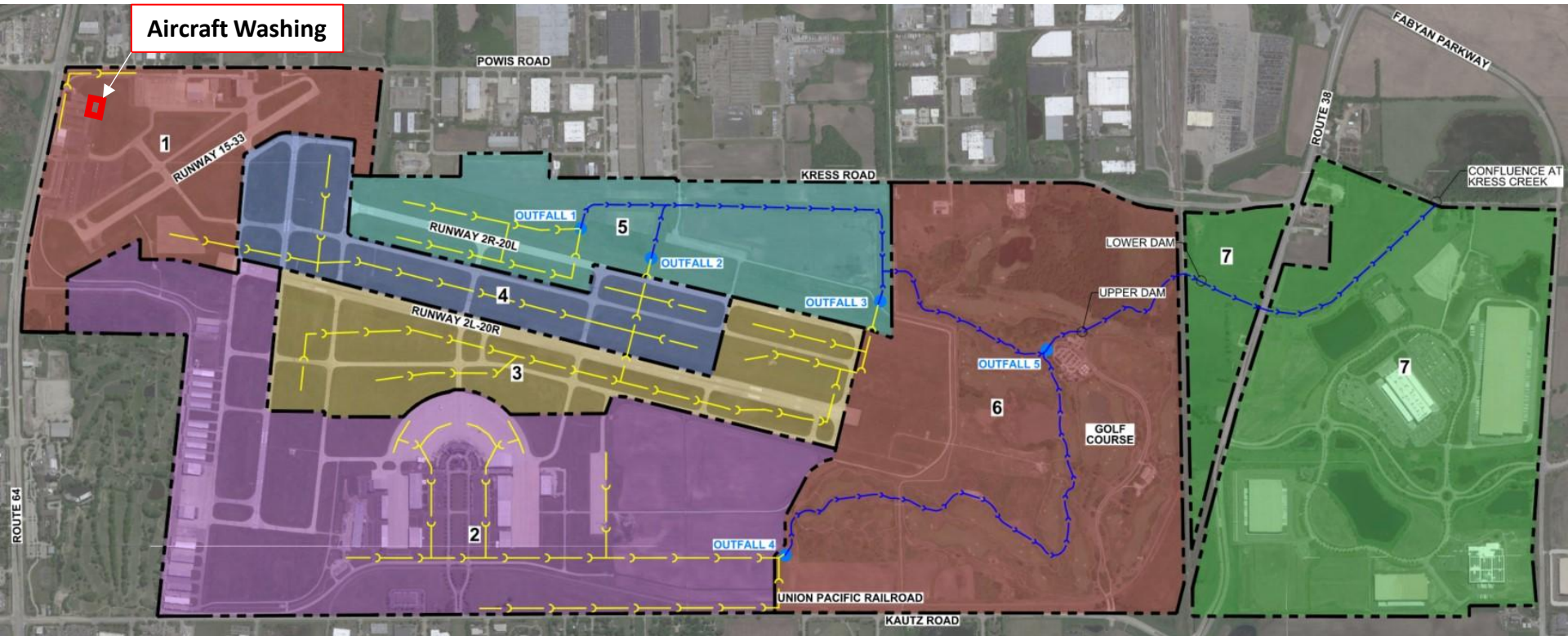
Self-fuel Station

Golf Course Maintenance Tanks

DUPAGE AIRPORT AIRCRAFT DEICING AREAS

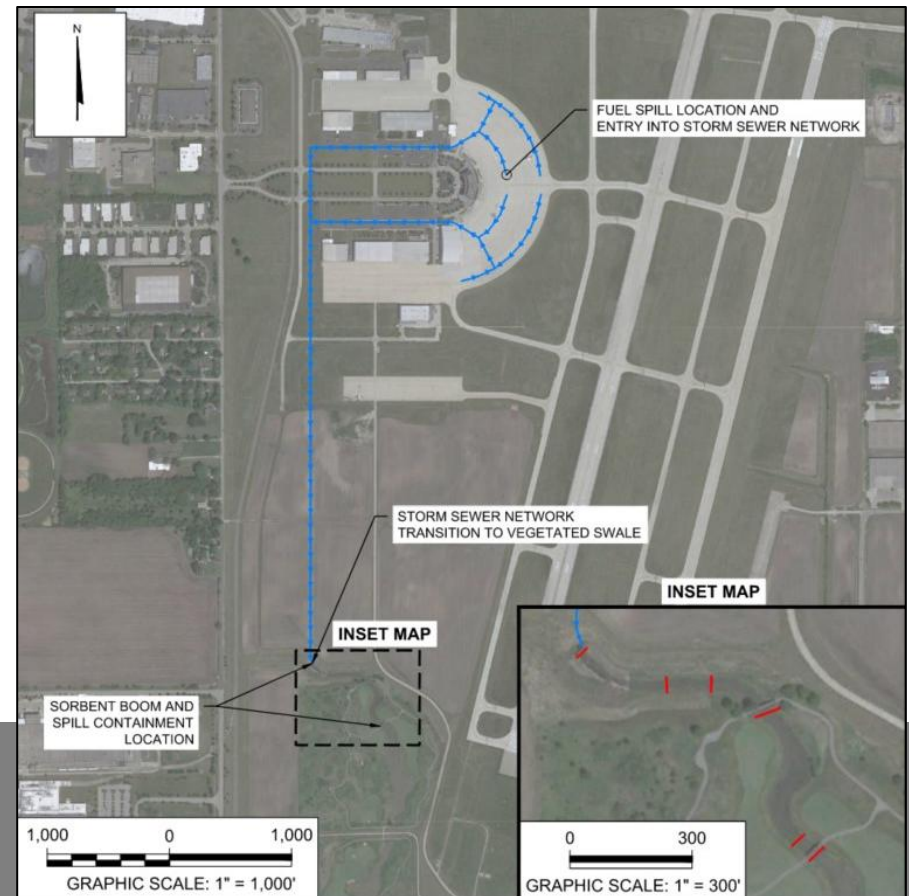


DUPAGE AIRPORT AIRCRAFT WASHING



EXAMPLE OF HOW SWPPP IS APPLIED

- March 9, 2020
- Storm water sampling event identified an oil sheen on the water surface at Outfall 4.



EXAMPLE OF HOW SWPPP IS APPLIED



QUESTIONS?



PURPOSE OF AN SPCC PLAN

- An SPCC Plan is required under Code of Federal Regulations, Title 40, Part 112 issued by USEPA.
- The goal of the SPCC Plan is to:
 - Protect navigable waters of the United States
 - Protect the environment and public health
 - Keep oil out of waterways
 - Provide a hierarchy of communication and procedures to initiate clean-up efforts



WHO NEEDS AN SPCC PLAN?

- SPCC Plans are required if a facility has:
 - Aboveground oil storage **1,320+** gallons in \geq **55**-gallon containers
 - Underground oil storage capacity **>42,000** gallons (some exclusions apply)
 - Facility must reasonably be expected to discharge oil into navigable waters or adjoining shorelines of the U.S.



DUPAGE AIRPORT SPCC PLAN



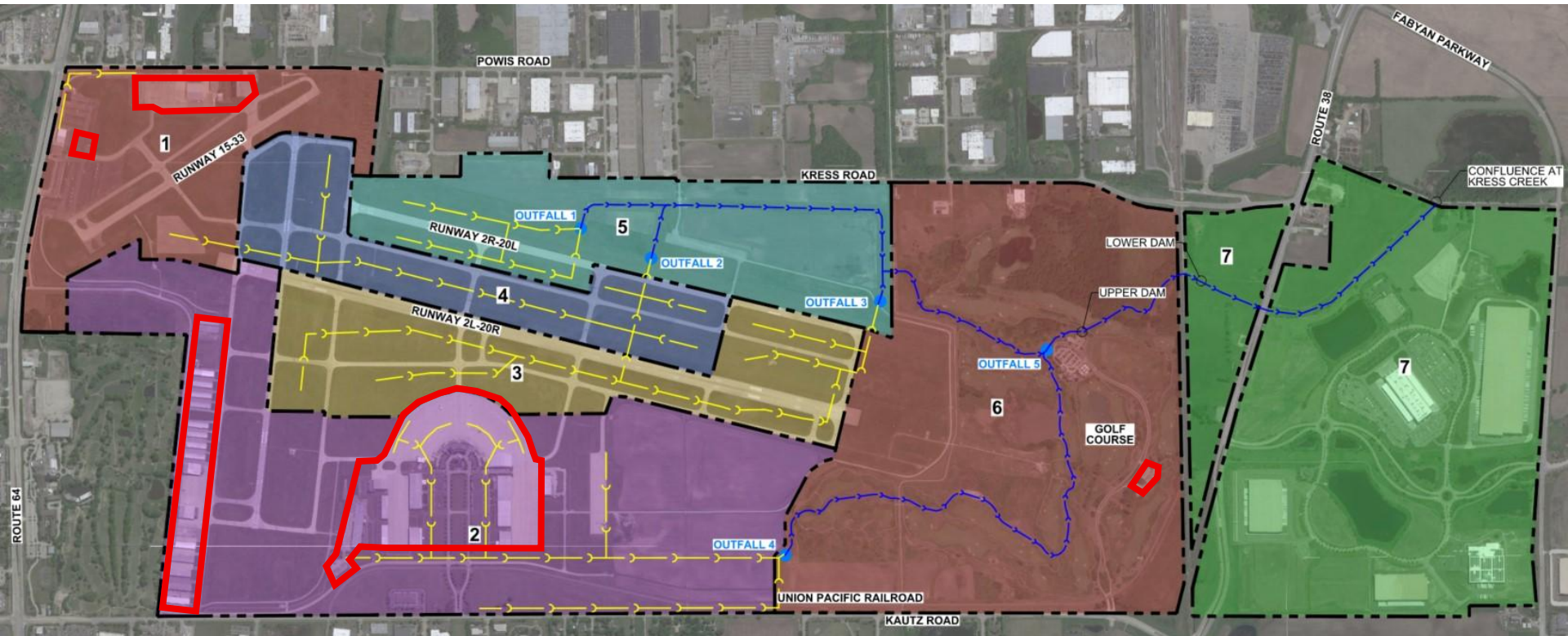
Aboveground Storage = 27,055-gallons* Belowground Storage = 122,000-gallons

CONTENTS OF THE SPCC PLAN

- Identifies key facility staff
 - Establishes roles and responsibilities
- Identifies spill response verbal and written notifications
- Identifies oil storage locations
- Establishes spill prevention and controls
 - Secondary containment
 - Oil transfer procedures
 - Tank inspection procedures
 - SPCC Plan reviews
 - Training (DAA Staff and Tenants)
 - Site security
- Includes storm water flow maps with potential pollutant source locations



DUPAGE AIRPORT FUELING AREAS

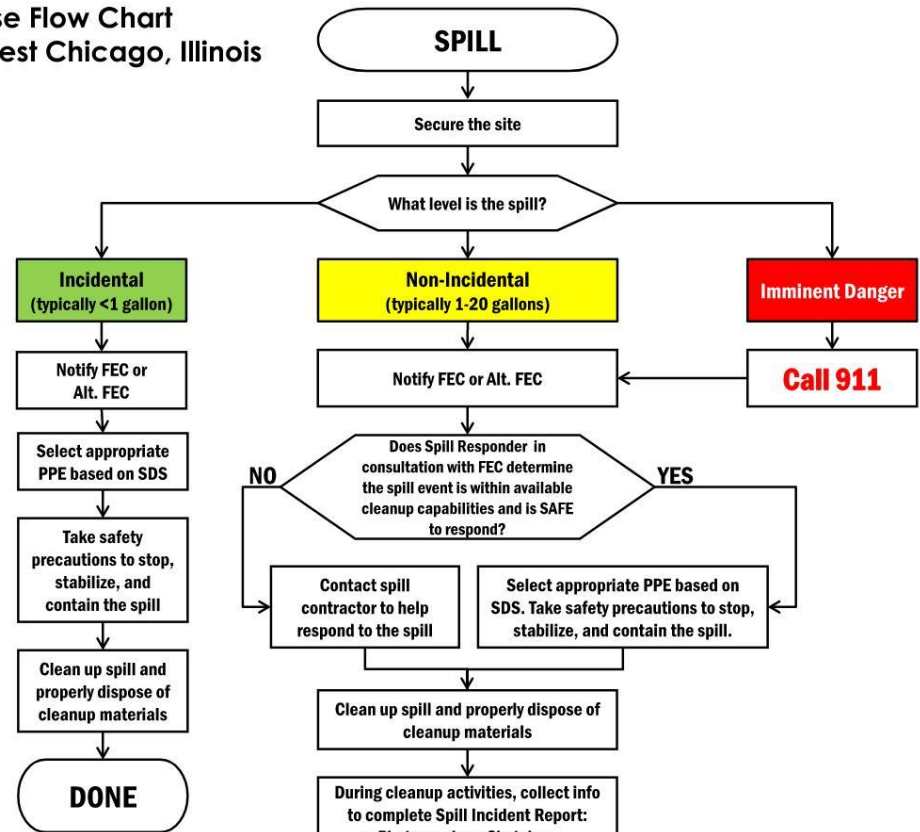


Spill Response Flow Chart DuPage Airport - West Chicago, Illinois

Spill Response Criteria		
Incidental Spills	Non-Incidental Spills	Imminent Danger Spills
<ul style="list-style-type: none"> The spill is small, less than 1 gallon. The spill can be easily contained. The spill is unlikely to reach a navigable waterway, storm sewer, or sanitary drain. Cleanup procedures do not pose a health or safety hazard. Proper response equipment is available for a safe cleanup. Responding personnel have completed annual spill training. Responding personnel are comfortable with cleaning up the spill. 	<ul style="list-style-type: none"> The spill is large enough to spread beyond the immediate area (generally 1 to 20 gallons in size). Spill may reach a navigable waterway, storm sewer, or sanitary drain. Spill may require special equipment or training to clean up. If facility personnel address the spill, responding personnel have completed annual SPCC training. If responding personnel are not comfortable cleaning up the spill, use a third-party contractor. 	<ul style="list-style-type: none"> Based on the assessment of the fuel delivery driver or trained oil handling employee(s), the spill poses an immediate hazard to human health or the environment. There is danger of fire or explosion (e.g., a spill of greater than 1 gallon of gasoline). Spill involves injury to personnel. The spill has reached a navigable waterway, storm sewer, or sanitary drain. The spill cannot be contained.
Response by facility personnel possible	Response requires coordination with FEC or Alternate FEC	Requires response by the West Chicago Fire Department – Call 911

FEC = Facility Emergency Coordinator

Contacts	FEC: Tom Cleveland, Director of Operations & Facilities Work: 630-208-6172 / Cell: 815-739-3100
	Alternate FEC: Dan Barna, Operations and Capital Program Manager Work: 630-208-6184 / Cell: 630-352-9776
	Other Phone Numbers for Emergency Coordinator Use Only: Illinois Emergency Management Agency 800-782-7860 EPA Region 5 Hotline 800-621-8431 National Response Center 800-424-8802 West Chicago Public Works Department 630-293-2255
	Other Phone Numbers: RCRA Hotline 800-424-9346
	Cleanup Contractor: HazChem Environmental Corp 630-458-1910 Tradebe Environmental Services 800-914-9111 Heritage Environmental Services 877-938-7948



*For oil spills only, the following conditions are considered releases to the environment:

- Discharge that caused a film or sheen upon or discoloration of the surface of the water or adjoining shorelines.
- Discharge that caused a sludge or emulsion to be deposited beneath the surface of the water or adjoining shorelines.
- 25 gallons or more of oil released into the environment (excluding navigable waters)

YOUR ROLE IN THE SPCC PLAN

- Minimize storage of used oils and greases on-site
 - Dispose in a timely manner
- Keep oil volumes ≥ 55 -gallons on secondary containment.
- Put sealed lids on containers < 55 -gallons to prevent spills.
- Store oils and greases away from drains and doorways.
- Maintain good housekeeping.
- Contact the DuPage Airport Authority if a spill occurs.



TENANT WASTE OIL DISPOSAL

- **Location:**

- DuPage Airport Maintenance Building
- 2751 N. Aviation Ave.
- M-F 7AM – 4PM
- Ph: 630-208-5603

- **Quantities:**

- Acceptable quantity < 25-gallons

- **Requirements:**

- Containers are closed and sealed.
- Label container with Name and Phone Number.
- Call the DuPage Airport Maintenance Building prior to drop-off.

QUESTIONS?



SWPPP AND SPCC INTERNAL AUDIT

- Inspections start today (May 5th) and will be completed by Wednesday (May 7th)
- Things we are reviewing:
 - Oil containers \geq 55-gallons are stored on secondary containment.
 - Spill Kits are labeled and ready for use.
 - Distancing potential pollutants away from drains and doorways.
 - Good housekeeping practices (no open oil containers, oil pans ready to spill over, Oil-Dri or bentonite on the ground that needs to be disposed of, etc.)
 - Compliance with the DAA Rules and Regulations Minimum Standards.
 - No outdoor storage of materials or equipment.




Source: Courtesy of the DAA

SCS ENGINEERS



 Spencer LaBelle, CPESC, CESSWI

 slabelle@scsengineers.com

 630-453-2839