

# Spill Response Flow Chart

DuPage Airport - West Chicago, Illinois

## Incidental Spills

- The spill is small, less than 1 gallon.
- The spill can be easily contained.
- The spill is unlikely to reach a navigable waterway, storm sewer, or sanitary drain.
- Cleanup procedures do not pose a health or safety hazard.
- Proper response equipment is available for a safe cleanup.
- Responding personnel have completed annual spill training.
- Responding personnel are comfortable with cleaning up the spill.

## Non-Incidental Spills

- The spill is large enough to spread beyond the immediate area (generally 1 to 20 gallons in size).
- Spill may reach a navigable waterway, storm sewer, or sanitary drain.
- Spill may require special equipment or training to clean up.
- If facility personnel address the spill, responding personnel have completed annual SPCC training.
- If responding personnel are not comfortable cleaning up the spill, use a third-party contractor.

## Imminent Danger Spills

- Based on the assessment of the fuel delivery driver or trained oil handling employee(s), the spill poses an immediate hazard to human health or the environment.
- There is danger of fire or explosion (e.g., a spill of greater than 1 gallon of gasoline).
- Spill involves injury to personnel.
- The spill has reached a navigable waterway, storm sewer, or sanitary drain.
- The spill cannot be contained.

**Response by facility personnel possible**

**Response by facility personnel possible**

**Requires response by the West Chicago Fire Department - Call 911**

## Contact Information

### **FEC: Dan Barna, Director of Operations & Facilities**

Work: +1 (630) 208-6184 / Cell: +1 (630) 352-9776

### **Alternate FEC: Joe Long, Field Maintenance Manager**

Work: +1 (630) 208-5602 / Cell: +1 (630) 632-5744

### **Other Phone Numbers for Emergency Coordinator Use Only:**

Illinois Emergency Management Agency: +1 (800) 782-7860

EPA Region 5 Hotline: +1 (800) 621-8431

National Response Center: +1 (800) 424-8802

West Chicago Public Works Department: +1 (630) 293-2255

### **Other Phone Numbers:**

RCRA Hotline: +1 (800) 424-9346

### **Cleanup Contractor:**

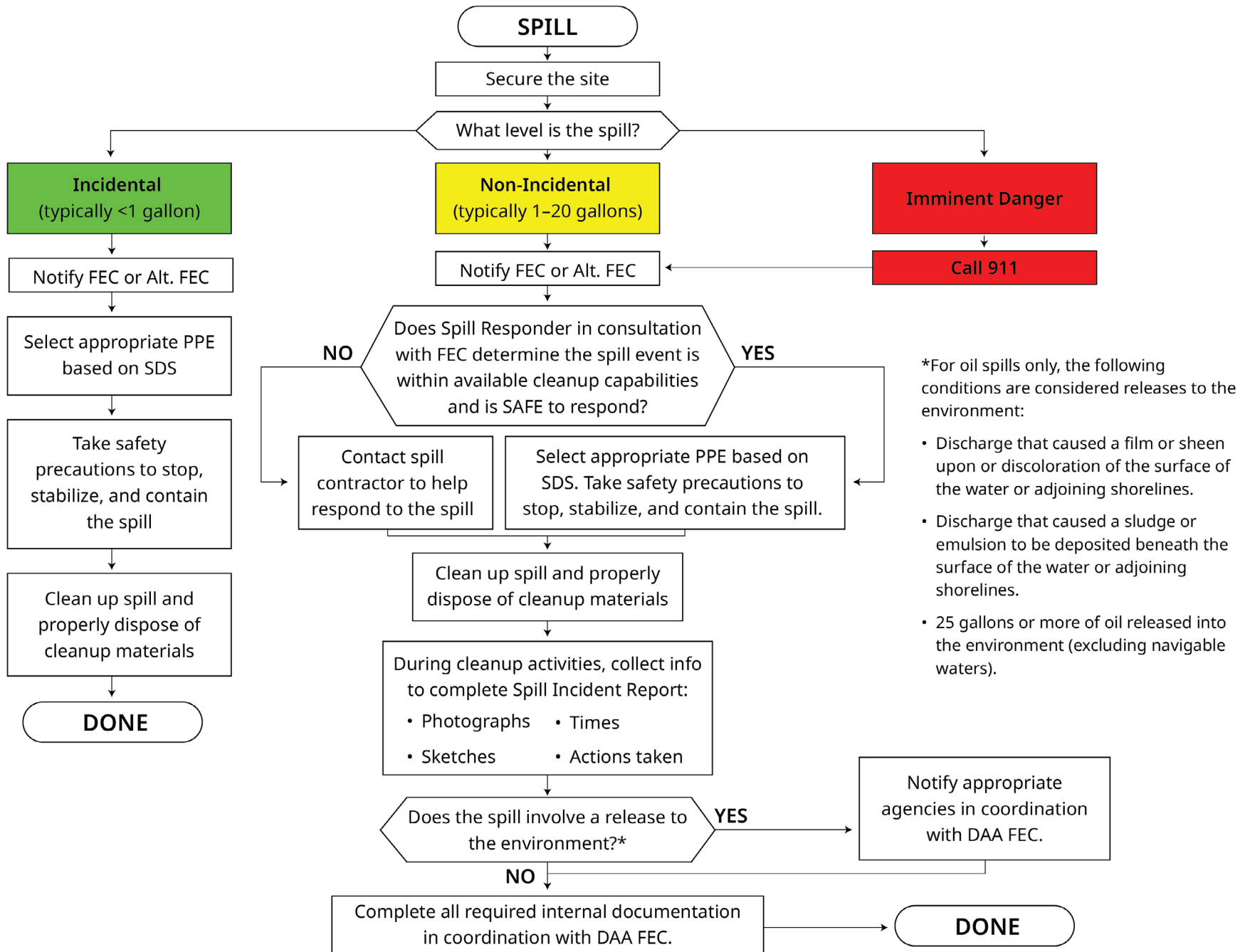
HazChem Environmental Corp: +1 (630) 458-1910

Tradebe Environmental Services: +1 (800) 914-9111

Heritage Environmental Services: +1 (877) 938-7948

**FEC = Facility Emergency Coordinator**

# Spill Response Procedure Flow Chart



[View Spill Response Flow Chart Description](#)

# Spill Response Procedure (Text Alternative)

## **Secure the site.**

Determine the level of the spill:

- Incidental Spill (typically less than 1 gallon)
- Non-Incidental Spill (typically 1–20 gallons)
- Imminent Danger Spill

## **If the spill is Incidental (typically <1 gallon):**

- Notify FEC or Alternate FEC.
- Select appropriate PPE based on SDS.
- Take safety precautions to stop, stabilize, and contain the spill.
- Clean up the spill and properly dispose of cleanup materials.
- Process complete.

## **If the spill is Non-Incidental (typically 1–20 gallons):**

- Notify FEC or Alternate FEC.
- Determine (in consultation with the FEC) whether the spill is within available cleanup capabilities and safe to respond to.

If YES (safe to respond):

- Select appropriate PPE based on SDS. Take safety precautions to stop, stabilize, and contain the spill.

If NO (not safe to respond):

- Contact a spill response contractor to assist with cleanup.

Then proceed with:

- Clean up the spill and properly dispose of cleanup materials.
- During cleanup activities, collect the following information to complete the Spill Incident Report: Photographs, Sketches, Times, and Actions taken.

- Determine whether the spill involves a release to the environment.\*

If YES:

- Notify appropriate agencies in coordination with the DAA FEC.
- Complete all required internal documentation in coordination with the DAA FEC.
- Process complete.

If NO:

- Complete all required internal documentation in coordination with the DAA FEC.
- Process complete.

## **If the spill is an Imminent Danger Spill:**

- Call 911 immediately.

## **\*Definition – Release to the Environment (for oil spills only):**

- A spill is considered a release to the environment if any of the following occur:
- A discharge causes a film, sheen, or discoloration on the surface of the water or adjoining shorelines.
- A discharge causes a sludge or emulsion to be deposited beneath the surface of the water or adjoining shorelines.
- 25 gallons or more of oil are released into the environment (excluding navigable waters).